



# Participatory Guarantee System – India

Field Coordinator Training Module



For a world without hunger





## WHAT IS PGS?

*“Participatory Guarantee Systems are locally focused quality assurance systems. They certify producers based on active participation of stakeholders and are built on a foundation of trust, social networks and knowledge exchange.”*

*(as defined by the International Federation of Organic Agriculture Movements, IFOAM)*



# Participatory Guarantee Systems

KEY ELEMENTS

FEATURES



SHARED VISION



TRUST



HORIZONTALITY



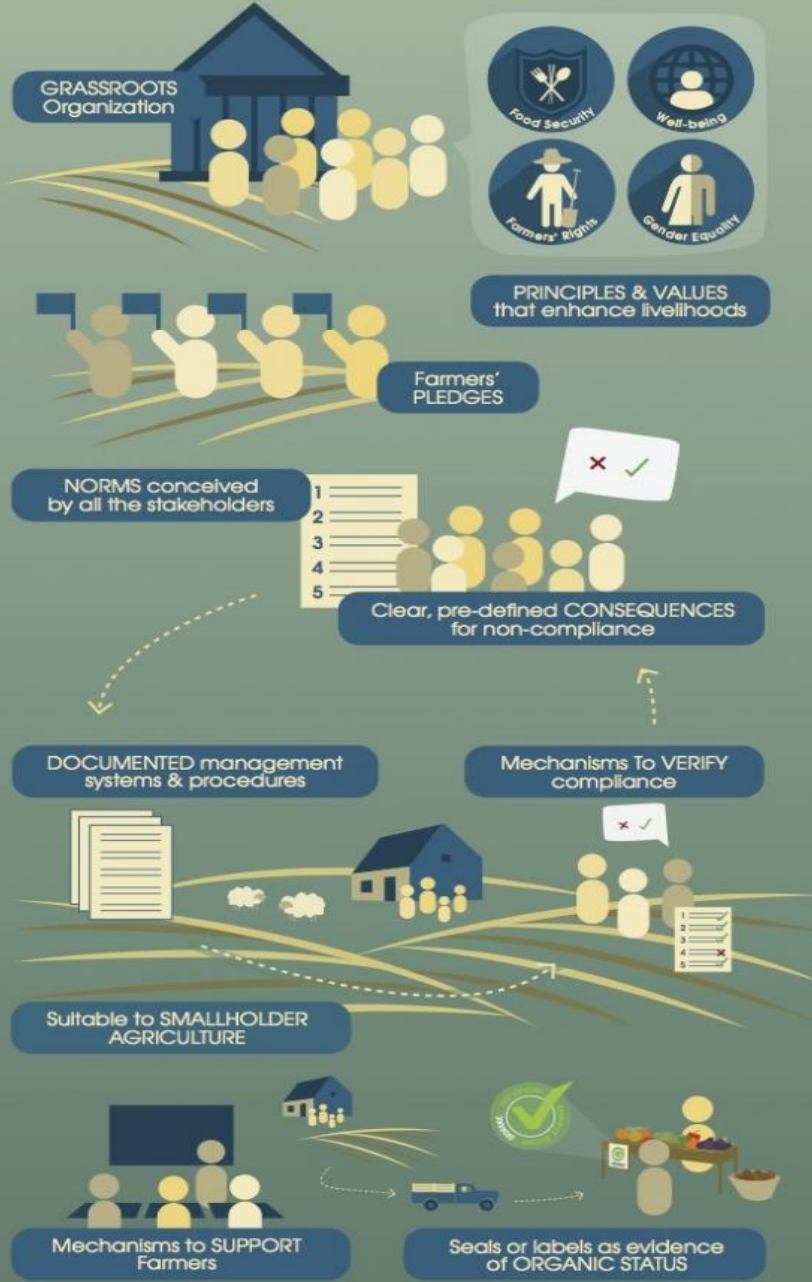
TRANSPARENCY



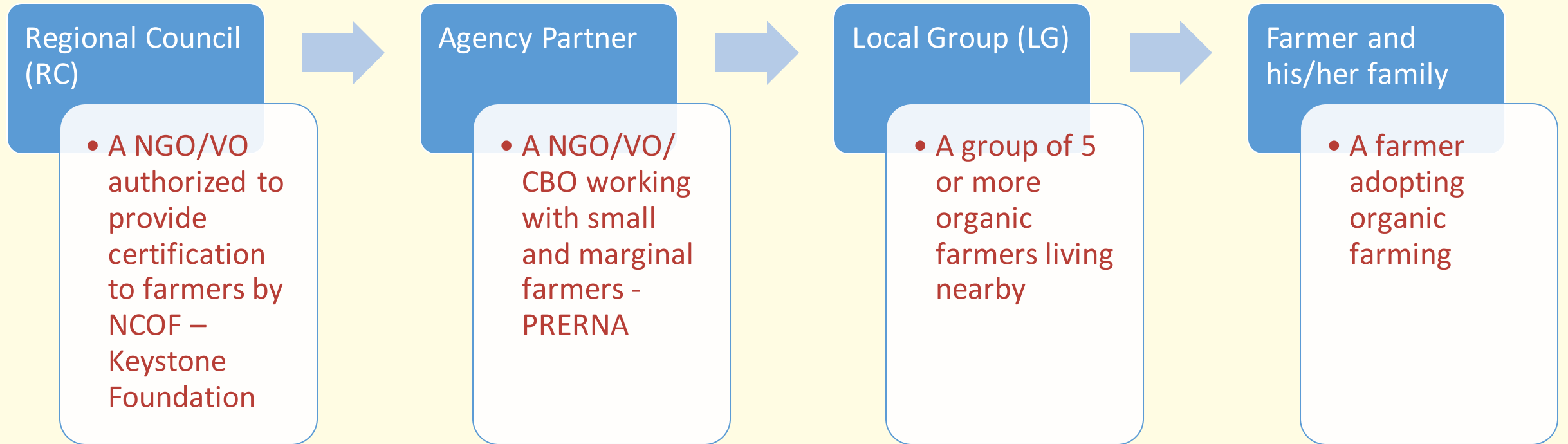
PARTICIPATION



LEARNING PROCESS



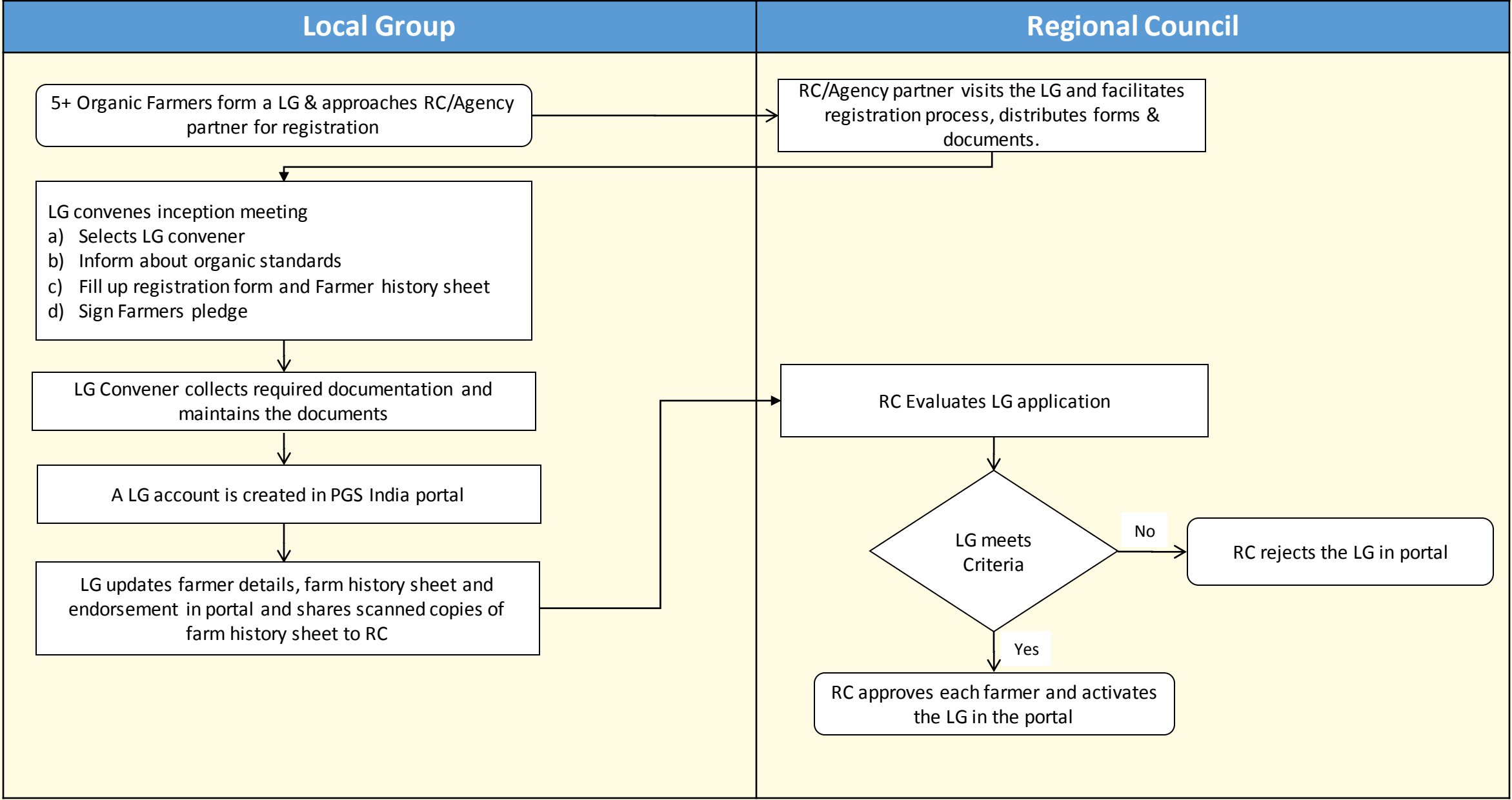
# Organisational Structure of project



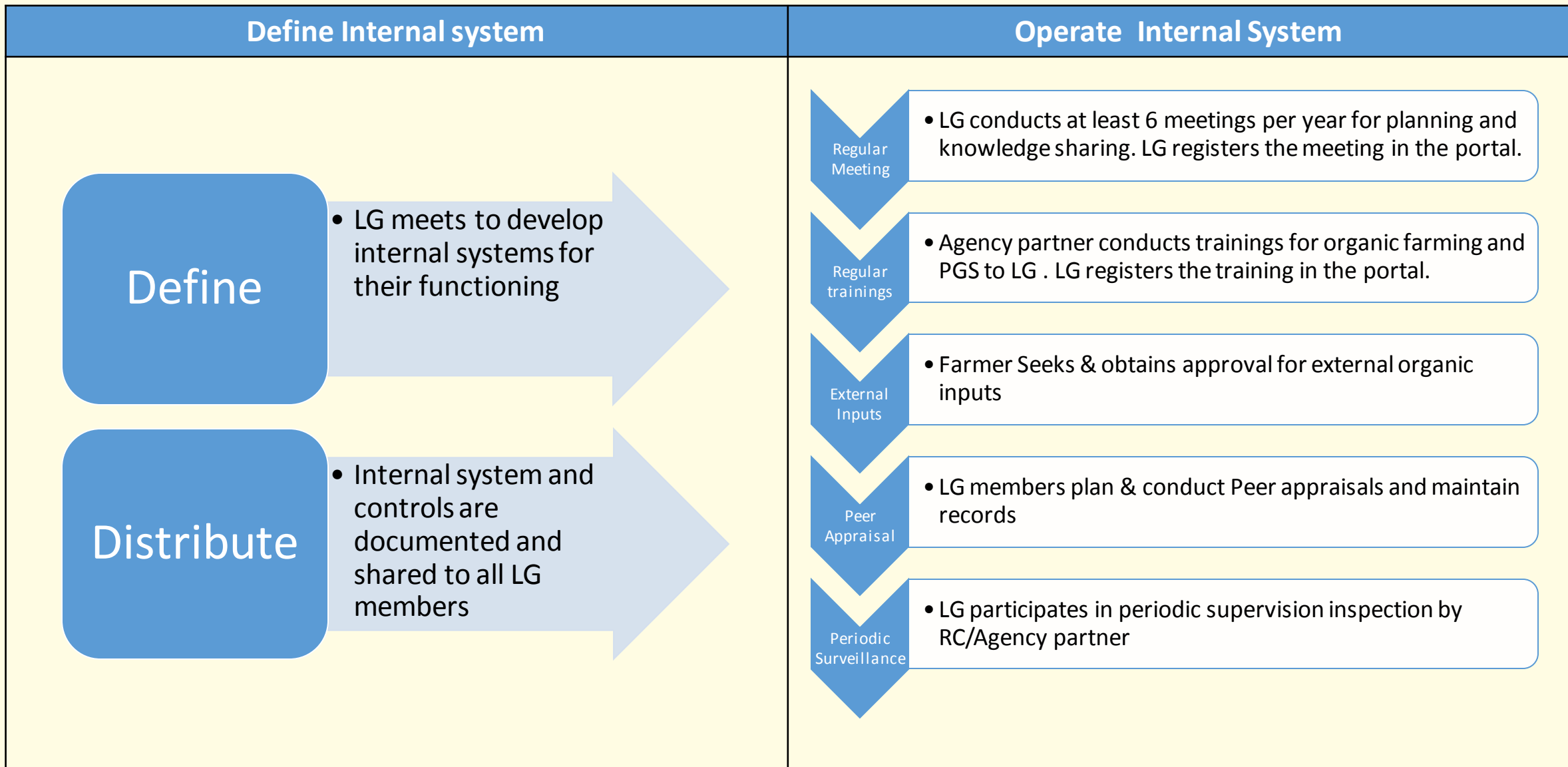
# PGSOC Certification Process



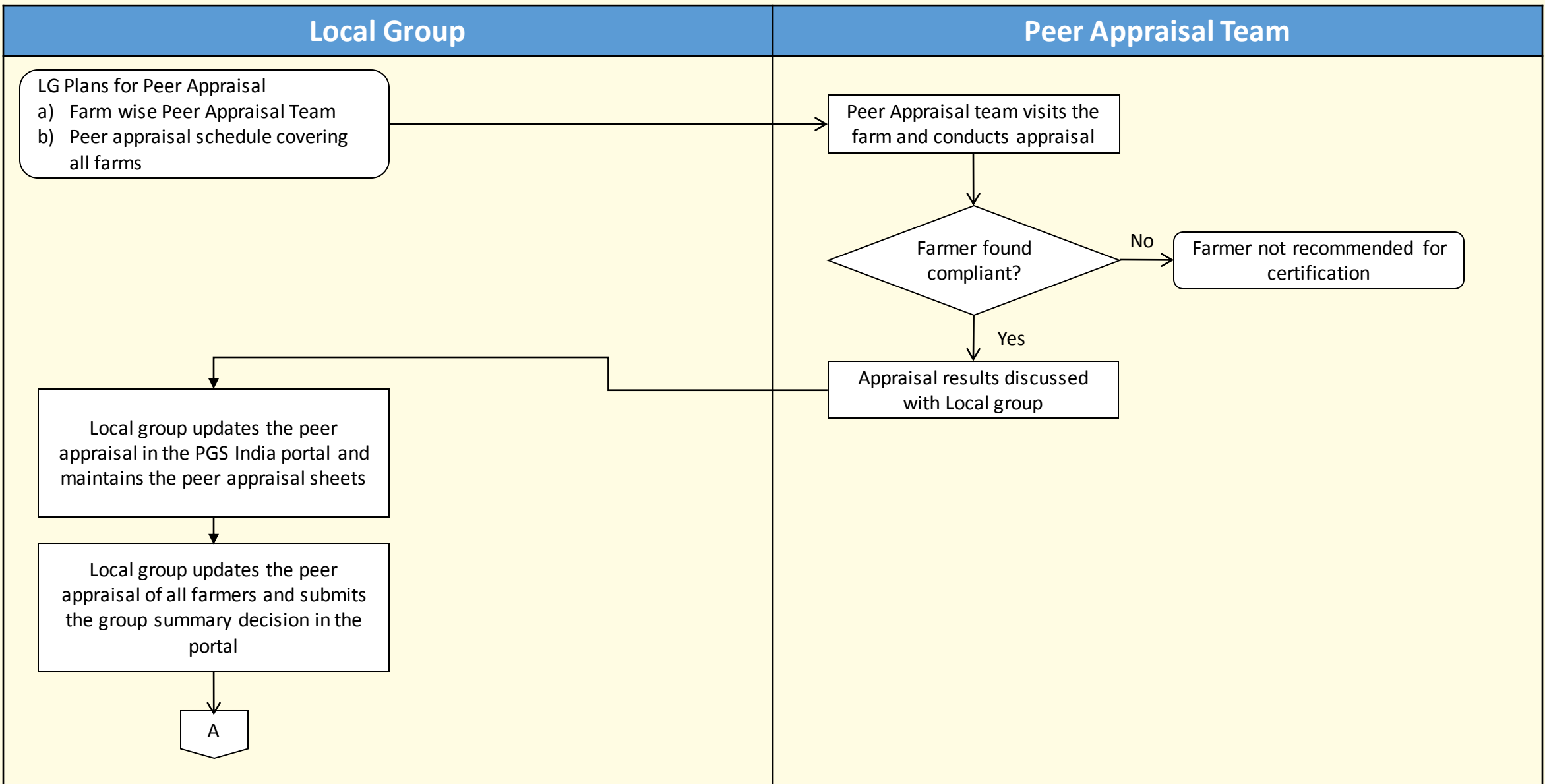
# LG Formation and Registration



# Functioning of LG

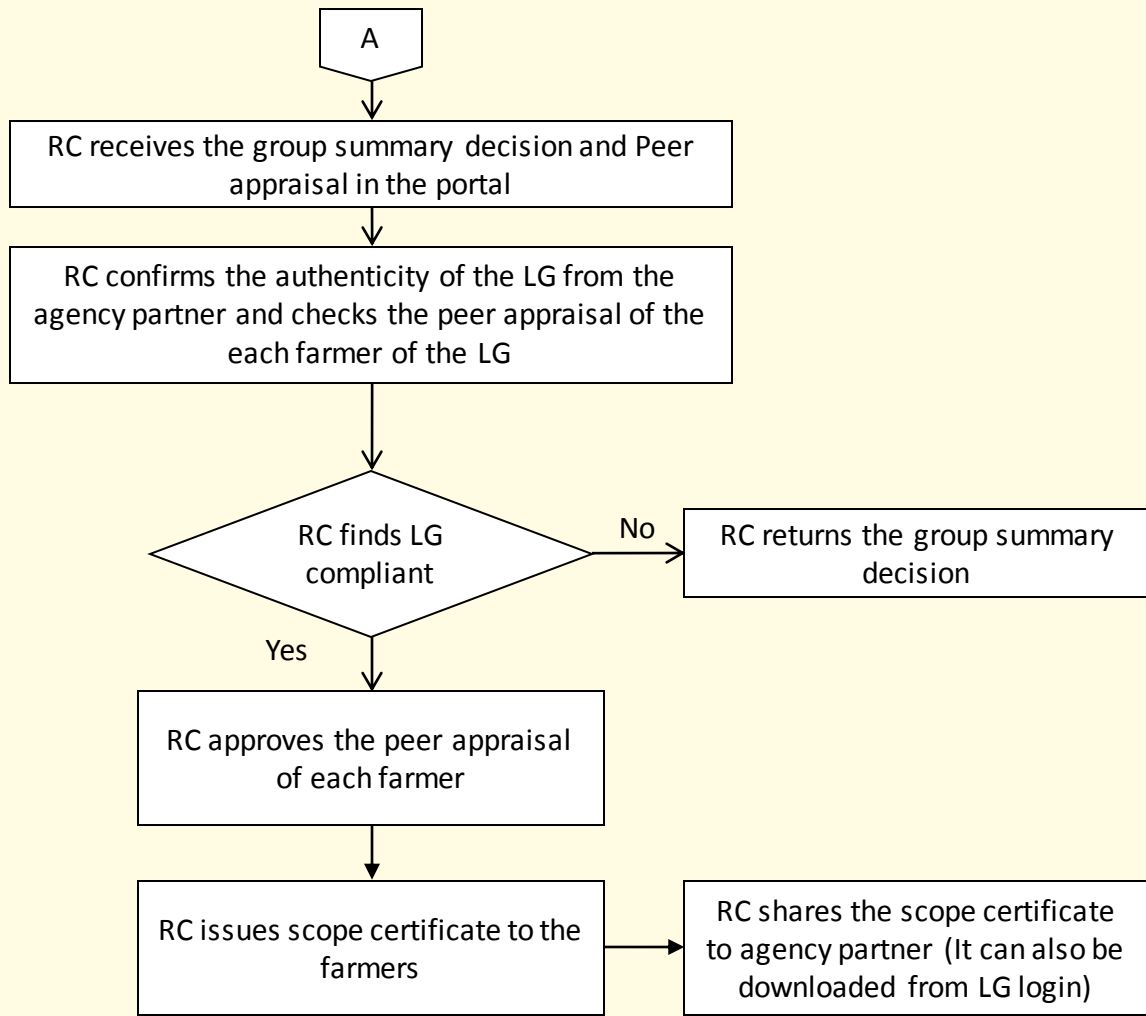


# LG – Peer Appraisal



# LG – Certificate Issuance

## Regional Council



## Non-Compliance Guidelines

“Catalogue of Sanctions”

Sanctions are given to farmers by the Local Group as a whole OR by the Local Group's elected Ethics Council (if one was created).

Situations	Type of sanction
<ul style="list-style-type: none"> <li>• Missing Attendance at a required Field Day</li> <li>• Unsatisfactory production system</li> </ul>	Verbal warning
<ul style="list-style-type: none"> <li>• Minor violations of the standards or regulations</li> <li>• Repeated written warning for similar problem</li> <li>• Not responding to approval conditions</li> </ul>	<i>Short Suspension of Certification</i> Period determined by length of time it takes for the Grower to get a new peer inspection/consultation
<ul style="list-style-type: none"> <li>• Repeated minor violations</li> <li>• Clear violation of the standards not threatening the organic integrity of the product</li> </ul>	<i>Suspension</i> for a fixed period after until farmer(s) take corrective actions.
<ul style="list-style-type: none"> <li>• Clear violation of the standards threatening the organic integrity of the product eg: use of prohibited pesticides or synthetic fertilisers.</li> </ul>	<i>Longer term suspension for 1 year</i> <i>Farmer may be moved back into “In Conversion” status</i>
<ul style="list-style-type: none"> <li>• Repeated violations leading to penalties, suspension or withdrawal of approval.</li> <li>• Obvious fraud</li> <li>• Intentional obstruction of the inspection eg: denying inspector access.</li> <li>• Refusal to respond to written requests for additional information</li> </ul>	<i>Termination of participation</i> Farmer(s) banned from PGS membership either permanently or for a set period of time.

***The Right of Appeal :*** The farmer's can make an appeal to the Regional Council within 2 weeks of the date of notification of the sanction by the Local Group OR to the Local Group as a whole if there is an Ethics Council that implemented the sanction.

# Document Management System

- Local Group Registration
  - i. Format of Agreement to be executed between PGS-India Regional Council and Local Group under PGS-India (To be signed on Rs. 20/- Non-Judicial Stamp paper)
  - ii. Application format for Registration of the Local Group (LG) with Regional Council
  - iii. Endorsement of Local Group
  - iv. For each farmer:
    - a) Application form for entry into PGS Local Group
    - b) FARMER HISTORY SHEET
    - c) Organic Farmer's Pledge
    - d) Identity proof of the farmer
- Functioning of LG
  - i. Meeting Register
  - ii. Training/Exposure visit Register
  - iii. Peer appraisal form for each season for each farmer
  - iv. Scope certificate for each farmer